



CORPORATE PARTNERS
EXCELLENCE THROUGH PEOPLE AND PROCESS

Manufacturing Capabilities



MSM20216 Certificate II Manufacturing Technology

Corporate Partners Pty Ltd RTO National Code - 91467



Proud to be a Queensland Government
subsidised training provider



Who are Corporate Partners?

Corporate Partners is a Registered Training Organisation (RTO-91467) providing nationally accredited training for the manufacturing and process industries. Our training programs establish Lean Manufacturing principles to a range of industries including Manufacturing, along with financial services, healthcare, warehousing, distribution and other processing sectors.

Why undertake a study program with Corporate Partners?

Corporate Partners offer training and assessment to learners/students nationally and has over 10 years' experience working and developing first class training and skills development programs. Our trainers and assessors work on site, taking leadership and mentoring roles in implementing programs and practices that guide learners/students and teams towards achieving success in their chosen qualification.

What will you learn?

The qualification MSM20216 Certificate II in Manufacturing Technology is designed specifically to cater for school students through a Vocational Education and Training in Schools (VETis) program. The program is designed to teach students Manufacturing capabilities and job ready skills, which uses principles derived through the units of competency within the MSM20216 qualification.

The units have been selected with careful consideration towards the qualification and how appropriately they suit students as well as individual school needs in conjunction with Corporate Partners Visual Management, Problem Solving, Quality, 5S, Environmental, WHS and safe operation of equipment. The final selection of 'standard' units for delivery of the qualification has been made in conjunction with industry, schools and government bodies to align with industry needs.

Successful students gain a qualification for MSM20216 Certificate II in Manufacturing Technology. This is nationally recognised throughout Australia and New Zealand which lifts their value to the business, industry and community.

How will you learn?

Each student enrolled through Corporate Partners will attend training and assessment sessions with our accredited trainers and assessors and will be provided with all the training materials needed to use throughout the entire course or qualification. A variety of theoretical, practical and interactive development strategies are employed. The modes of assessment delivery include written knowledge questions, demonstrations, discussions, simulations, structured assessment tasks and presentations.

Location of Training

The training and assessment are conducted in the students school or a host partner school as well as in the environmental training hub utilising the school facilities.

Duration of Training

FULL QUALIFICATION

MSM20216 - Certificate II in Manufacturing Technology

The duration of the program is 12 months delivered in a school training environment.

Students and Industry reap the rewards

- Provides students with a set of competencies that open pathways into future employment
- Nationally recognised qualifications to successfully completed students
- Planning and problem-solving skills that will deliver improved results and outcomes for the learner and school
- Practical processes which focus all students on key issues, which align their activities with the environmental strategies and goals of the school
- Prepare students to be "job ready" to peruse their careers in Industry



CORPORATE PARTNERS
EXCELLENCE THROUGH PEOPLE AND PROCESS

How will you be assessed?

We provide students with clear descriptions of the performance standards expected of them. Assessments are conducted in accordance with the quality standards of the assessment procedure as approved by the National Skills Standard Council, the Standards for RTOs and training package requirements for the course or qualification. Assessments will be conducted according to training plans developed and agreed between the learner, trainers, assessors and teachers. Corporate Partners assessors will inform students of all aspects of their assessments prior to formal assessment. This will include assessment methods, assessment instructions, assessment duration, assessment tools and any applicable reasonable adjustments to the assessment process where appropriate. On successful completion of this course, Corporate Partners will provide students with a Certificate II in Manufacturing Technology. Students will be marked not as percentage or a pass or fail but as 'Competent' or 'Not Yet Competent'. If you did not get to complete the whole course, you will be provided with a statement of attainment showing all successful units completed.

Where can Manufacturing Technology be applied?

The Certificate II in Manufacturing Technology applies particularly to VET in school students and suitable for a delivery in a school environment.

The course is designed to incorporate job ready skills necessary for Manufacturing, encompassing equipment operation, Lean principles, problem solving strategies, health and safety, environmental, quality and 5S. The students are developing not only Manufacturing capability strategies but are also acquiring work ready skills.

Learner Skills Program

Typically, the implementation work will be undertaken through a series of projects, providing the opportunity to address a specific issue or area and achieve defined outcomes. Corporate Partners programs are delivered through structured on-the-job learning, workshops and include one-to-one guidance and coaching for students when required.

What's in this program for schools?

To have your school recognised as a quality educational industry leader through providing vital industry capabilities with qualification in MSM20216 Certificate II in Manufacturing Technologies. This in-demand qualification is described as vital by both our State Development for Manufacturing and by Industry and is a major differentiator, if not essential, for students seeking to access quality careers in Manufacturing and Engineering.

Drive student and school success through the delivery of MSM20216 Certificate II in Manufacturing Technologies.

Where can this lead to?

The MSM20216 Certificate II in Manufacturing Technology has been developed specifically for use as a Vocational Education and Training in Schools (VETis) program. It provides students with a set of competencies that collectively open up pathways into employment and/or further study. The MSM20216 qualification will better prepare students with the knowledge and experience of what employees are looking for in employing new staff. You will have an advantage over others to gain a valuable career in the manufacturing sector.

Training doesn't have to stop at the Certificate II, with Corporate Partners also offering Certificate III and IV in Competitive Systems and Practices as a potential pathway to continued development of key skills.

MSM20216 Certificate II in Manufacturing Technology

Recommended Units

1	MSMWHS200 Work safely
2	MSS402001 Apply competitive systems and practices
3	MSS402080 Undertake root cause analysis
4	MSS402051 Apply quality standards
5	MSMENV272 Participate in environmentally sustainable work practices
6	MSMPCII295 Operate manufacturing equipment
7	MSS402002 Sustain process improvements
8	MSS402010 Manage the impact of change on own work
9	MSS402031 Interpret product costs in terms of customer requirements
10	MSS402040 Apply 5S procedures

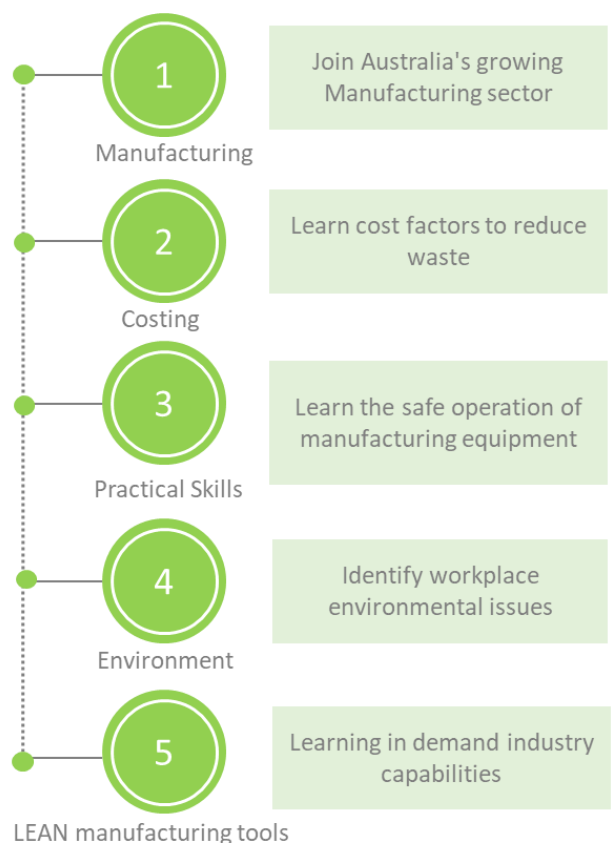
Funding

VETiS is a funded program that enables students to gain nationally recognised qualifications while at school. Students learn skills and knowledge required for specific industries.

VETiS is funded by the VET investment budget, it is fee-free for students. Subsidies paid to Skills Assure Suppliers (SAS) for VETiS delivery are detailed in the Priority Skills List.

The maximum subsidy for VETiS students will be paid in most circumstances. The subsidy for each VETiS qualification should cover the costs associated with participating in the training. In some instances, however there may be a shortfall between the subsidy level and the fees charged by the SAS. This is known as the co-contribution fee. This fee must be paid by the school to the SAS. A SAS must disclose any fees upfront and clearly publish them on their website.

This allows schools and students to be informed of all training costs and able to compare co-contribution fees across different SAS providers.



Corporate Partners clients right across Australia

Capral - Trisco Foods - bernafon - Downer EDI Rail - CQMS Razer - CQMS Castings - Reliance Worldwide - Crane Copper Tube/Metals - Global Manufacturing Group - Weston Cereal Industries - Hyne Timber - Bundaberg Sugar - Seawind Catamarans Sun Engineering Australia - Camerons - Gekko - L and M Radiator - AlSCO - Iplex Pipelines Rockpress - Chess Engineering - Prysmian - Schweppes - Birch and Waite - Adpost

Corporate Partners: PO Box 252 Menai NSW 2234 ABN: 62 099 306 055 Phone Toll free: 1800 104 899

Email: requests@corporatepartners.com.au Website: www.corporatepartners.com.au